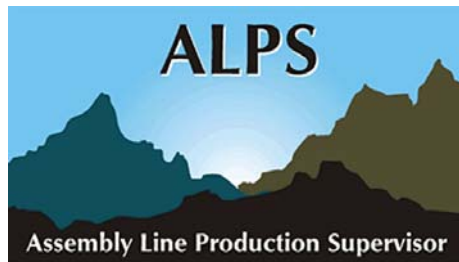


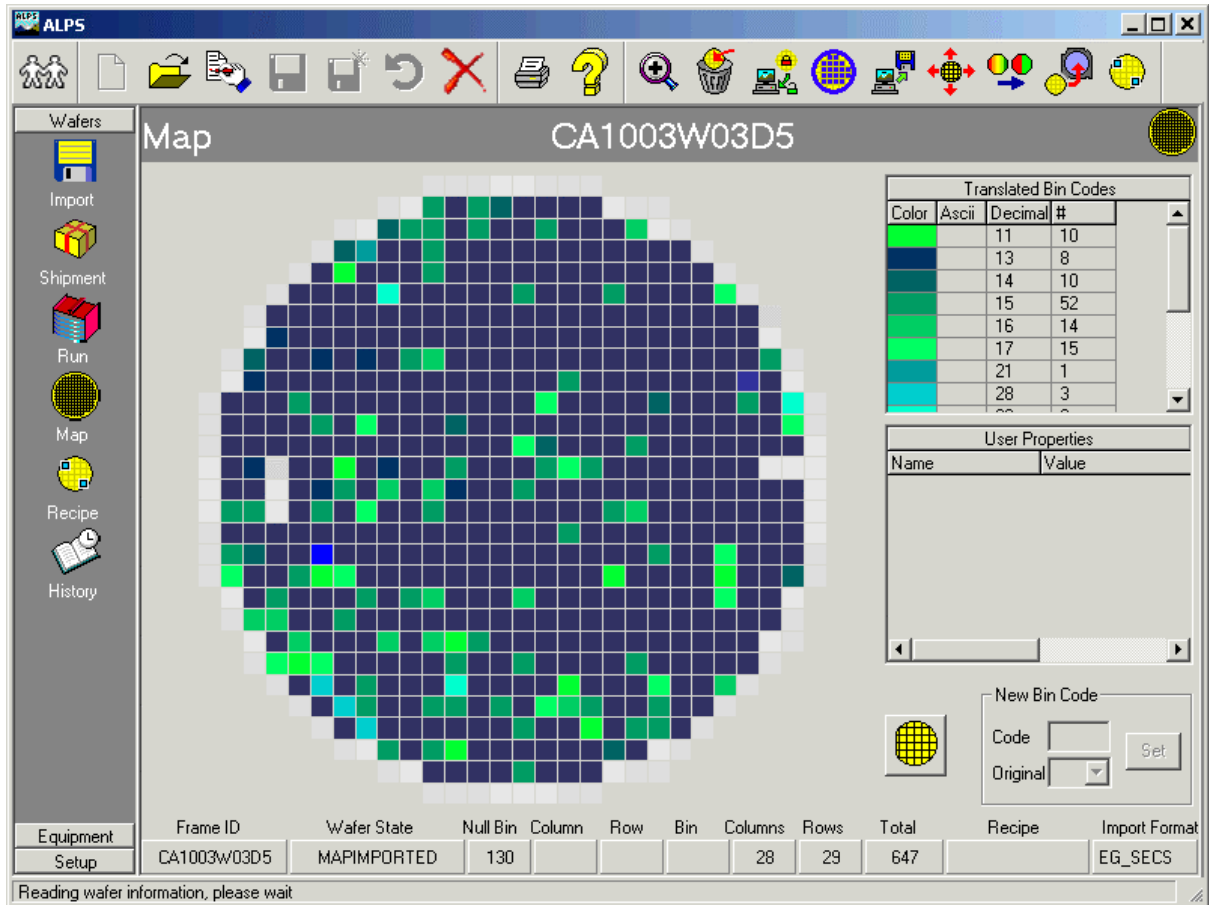
# ALPS LT 2.81 Release Bulletin



## General

- ❑ Example procedures for ALPS database backup and restore have been built and added to the documentation. See the Installation Guide section "System Maintenance".
- ❑ Scripts and procedures are supplied to upgrade ALPS databases from software version 2.80 to 2.81. See the Installation Guide section "Installing an Upgrade".
- ❑ All four planned ALPS EL Options have been implemented:
  - Automatic Import (add Sort screen)
  - Map History (add History screen)
  - Map Editing and Splitting
  - Lot Management (add Shipment and Run screens)
- ❑ The "phantom dies" bug has been resolved: Wafer maps displayed on the various ALPS screens were sometimes not shown correctly, suggesting more columns to be present than was actually the case.
- ❑ Some improvements were made to the licensing mechanism.
- ❑ The installation procedure has been cleaned up somewhat: It is no longer necessary to use the Windows Registry Editor directly, strongly reducing the risk that the Registry gets damaged.
- ❑ The use of "tooltips", e.g. to show die coordinates, was improved. Tooltips appeared too quickly and at undesired locations.
- ❑ On the Run, Map and History screens, an operator facility was added to rotate the wafer map displayed. The orientation icon is replaced by a rotation button.

The rotation button is furthermore positioned at a different screen location, so that, unlike the old wafer orientation icon, it does not overlap the wafer map area:

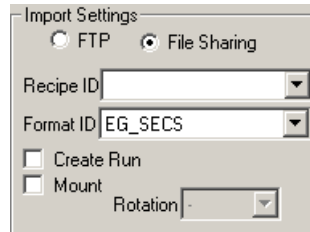


- The Shipment and Run printouts now include an overall bin code quantity table:

| Run Information |              | CA1003      |             |
|-----------------|--------------|-------------|-------------|
| Run ID:         | CA1003       |             |             |
| Wafers in run:  |              |             |             |
| Wafer ID        | Frame ID     | Wafer State |             |
| CA1003W01E7     | CA1003W01E7  | MAPIMPORTED |             |
| CA1003W02E2     | CA1003W02E2  | MAPIMPORTED |             |
| CA1003W03D5     | CA1003W03D5  | MAPIMPORTED |             |
| CA1003W04D0     | CA1003W04D0  | MAPIMPORTED |             |
| CA1003W05C3     | CA1003W05C3  | MAPIMPORTED |             |
| CA1003W06B6     | CA1003W06B6  | MAPIMPORTED |             |
| CA1003W07B1     | CA1003W07B1  | MAPIMPORTED |             |
| CA1003W08A4     | CA1003W08A4  | MAPIMPORTED |             |
| CA1003W09H2     | CA1003W09H2  | MAPIMPORTED |             |
| CA1003W10A4     | CA1003W10A4  | MAPIMPORTED |             |
| Bin list:       |              |             |             |
| Code (Decimal)  | Code (Ascii) | Count (Run) | Description |
| 11              | (n/a)        | 381         |             |
| 12              | (n/a)        | 9           |             |
| 13              | (n/a)        | 152         |             |
| 14              | (n/a)        | 173         |             |
| 15              | (n/a)        | 1076        |             |
| 16              | (n/a)        | 401         |             |
| 17              | (n/a)        | 470         |             |
| 49              | 1            | 10695       |             |
| 55              | 7            | 19          |             |
| 253             | (n/a)        | 1224        |             |
| 254             | (n/a)        | 792         |             |

## ***Import Screen***

- ❑ Features were added, allowing to automatically group wafers in Runs on import, to automatically assign frame IDs and to specify the wafer orientation on the frame:

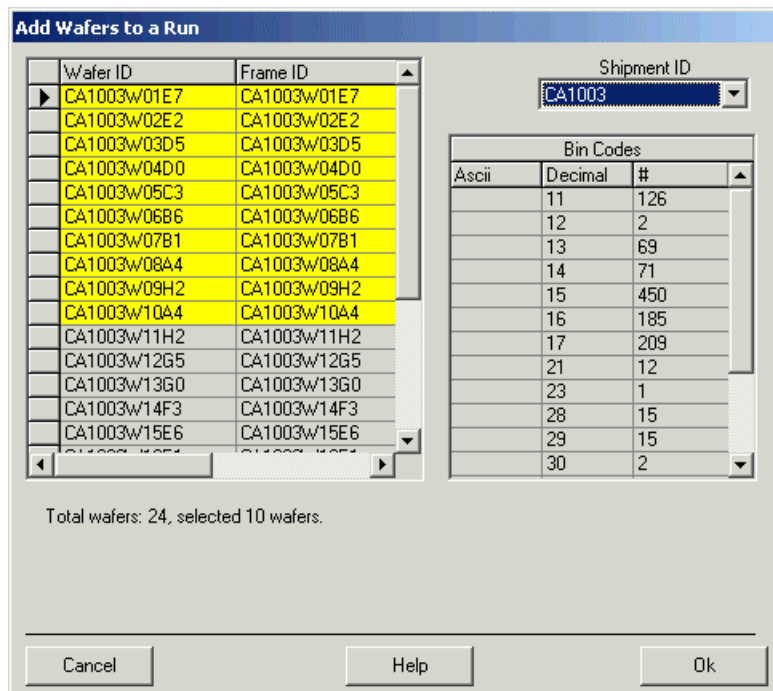


As a consequence, the automatic frame ID creation by Sort when "Print" option is selected on System Setup, as been removed.

- ❑ A bug was repaired regarding the automatic recipe creation on wafer map import: "Recipe already exists".
- ❑ The error "Illegal use of null" was resolved, when importing from a shared directory using a username with empty password.

## ***Run Screen***

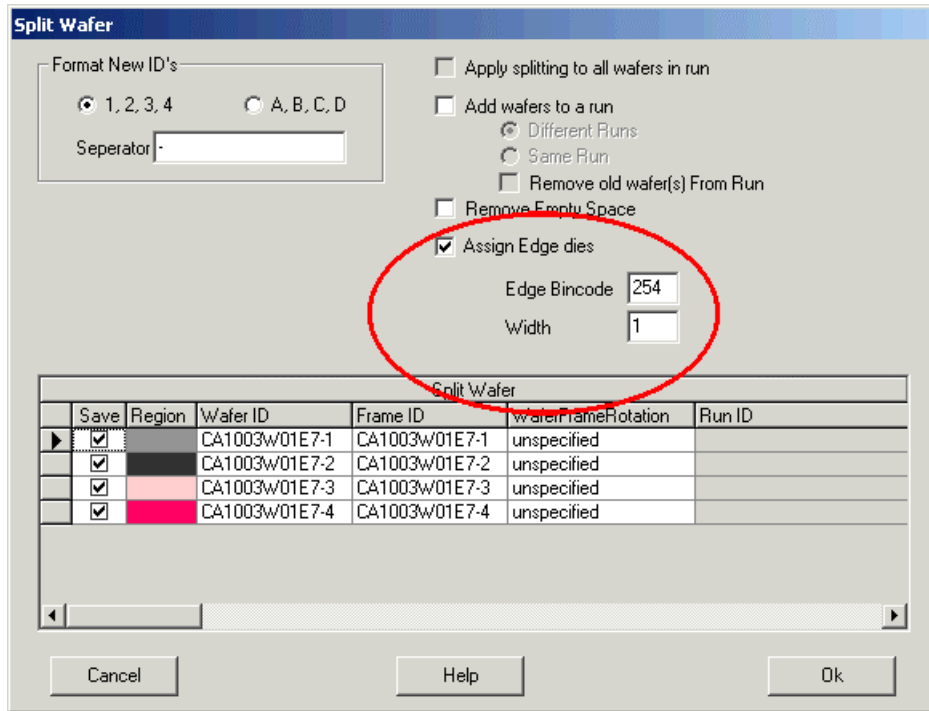
- ❑ The procedure to create a Run from a (complete or partial) Shipment has been simplified. Here is an example of the new scenario:
  1. On the Run screen, press "New"
  2. Wafer selector window appears
  3. On this window, select a shipment (instead of wafers)
  4. All wafers from the shipment are shown, and all are selected to be assigned to the run. You can change this default selection:



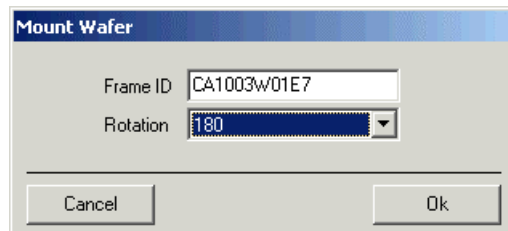
- When you press "Ok", the selected wafers are added, and you are requested to specify the RunID (default identical to the Shipment ID)

## Map Screen

- A feature was added to the map splitting function: "Remove edge dies" along splitting lines; number of rows/columns user-configurable 0, 1, 2, ...:



- ❑ The Map Splitting facility allows to move the cutting lines one die position, using the keyboard arrow keys (when used in combination with the Ctrl button).
- ❑ The "Wafer Mount" function now includes specifying the wafer orientation on the frame:



- ❑ A facility has been added to specify a recipe per wafer, using the new toolbar

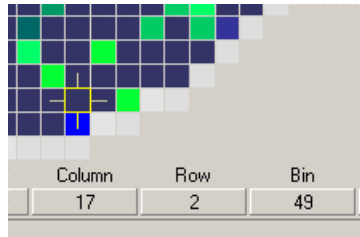


Recipe button

- ❑ For "Broken Wafer" editing, when splitting a wafer with the "rubber band" tool the cutting line should now be terminated using the right mouse button (instead of the ESC key).

## Recipe Screen

- ❑ Coordinates of the selected die are now being displayed:



- ❑ An inconvenience has been removed: It is now possible to specify the wafer size without having to specify the die sizes as well.
- ❑ The order of the columns in the Bin List has been corrected. It now looks as follows:

Bin Codes

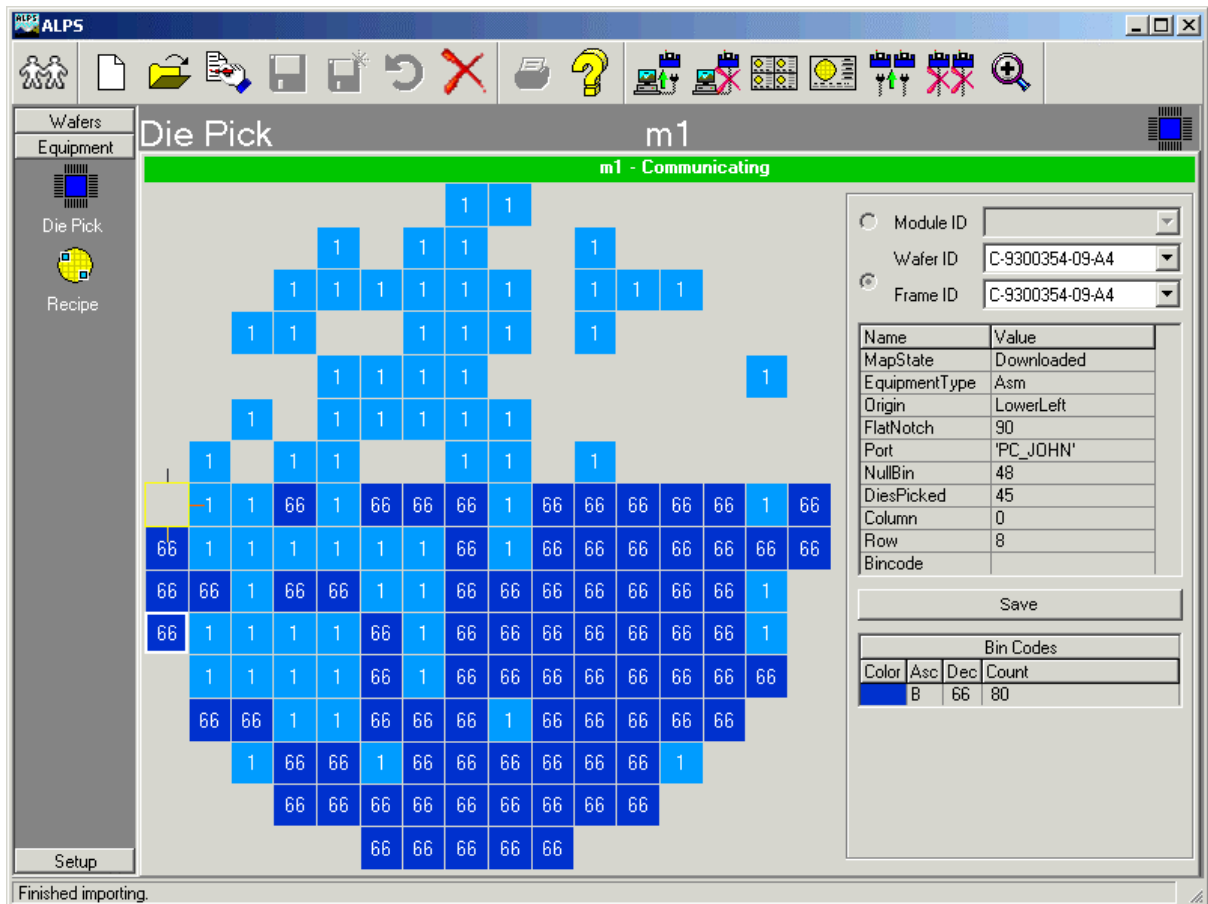
Show Code  
 Decimal  Ascii

|  | From | Quality | Description | To   | Pick                                |
|--|------|---------|-------------|------|-------------------------------------|
|  | #29  | Unknown |             | #29  | <input type="checkbox"/>            |
|  | #30  | Unknown |             | #30  | <input type="checkbox"/>            |
|  | 1    | Unknown |             | 1    | <input checked="" type="checkbox"/> |
|  | 7    | Unknown |             | 7    | <input type="checkbox"/>            |
|  | #130 | Nullbin |             | #130 | <input type="checkbox"/>            |
|  | #251 | Unknown |             | #251 | <input type="checkbox"/>            |
|  | #253 | Unknown |             | #253 | <input type="checkbox"/>            |

## **Die Pick Screen**

- ❑ Additional information is now shown on the Die Pick screen, resulting in a layout change of the information:
  - Includes list of bin codes to be bonded, with number of remaining dies
  - select die and get coordinates and bin code by clicking (overruled by die selection from die picking)
  - save button also visible on lowest supported resolution (800x600)

Here is an example:



- ❑ Automatic recovery from certain SQL (ODBC) error states has been improved, resulting in automatic reconnection of equipment with the ALPS database after network problems.
- ❑ Some changes were made to the equipment driver, to allow ALPS to handle miscommunication experienced with certain ASM equipment models.
- ❑ An improvement has been made to the handling of die picking information received from equipment. Restarting the equipment driver no longer results in error messages from ALPS on subsequent die pick messages, because ALPS does not know to which wafer the messages apply.

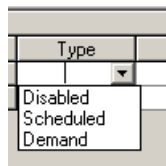
## Sort Setup Screen

- ❑ For automatic import, you can now define that the following information is automatically added: Run ID, Frame ID, orientation of wafer on the frame:

| Import Settings |          |                    |                                     |                                     |                                     |          |        |
|-----------------|----------|--------------------|-------------------------------------|-------------------------------------|-------------------------------------|----------|--------|
| Type            | Format   | Path               | Sub Folders                         | Run                                 | Mount                               | Rotation | Recipe |
| Scheduled       | SEMI G85 | \\ServerD\Wfrmaps\ | <input checked="" type="checkbox"/> | <input checked="" type="checkbox"/> | <input checked="" type="checkbox"/> | 90       | (none) |
| *               |          |                    | <input type="checkbox"/>            | <input type="checkbox"/>            | <input type="checkbox"/>            |          |        |

As a consequence, the automatic frame ID creation by Sort, when "Print" option is selected on System Setup, has been removed.

- It was found that the new "Automatic Import" feature, introduced in ALPS 2.80, does not work reliably. Because it is not clear how this could be resolved, this feature has been removed again in software version 2.81:



Instead, the minimum time interval for "Scheduled Import" has been reduced from one hour to five minutes.

## **Contact KINESYS Software**

ALPS is a product of KINESYS Software. You can contact us as follows:

### **Europe office**

Address: Achter Sint Pieter 21, NL – 3512 HR Utrecht, The Netherlands  
Tel.: +31 30 233 2331  
Fax: +31 30 233 1559  
E-mail: [support@kinesys.nl](mailto:support@kinesys.nl)

### **USA office**

Address: 6 C Street, Petaluma, CA 94952, U.S.A.  
Tel.: +1 707 766 8855  
Fax: +1 707 766 8196  
E-mail: [SalesUSA@kinesysinc.com](mailto:SalesUSA@kinesysinc.com)

### **Company information**

For further information about KINESYS Software, you can also consult our website:  
<http://www.kinesysinc.com/>