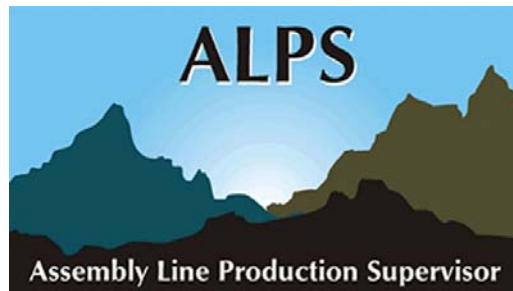


ALPS LT 2.70 Release Bulletin



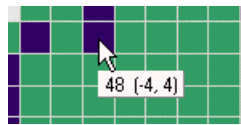
General

- ❑ Introduction of Recipes.

The "Product Setup" mechanism has been replaced by a "Recipe" feature. Recipes are similar to the old Product Setups, but their use is somewhat different and has been adapted to customer inputs.

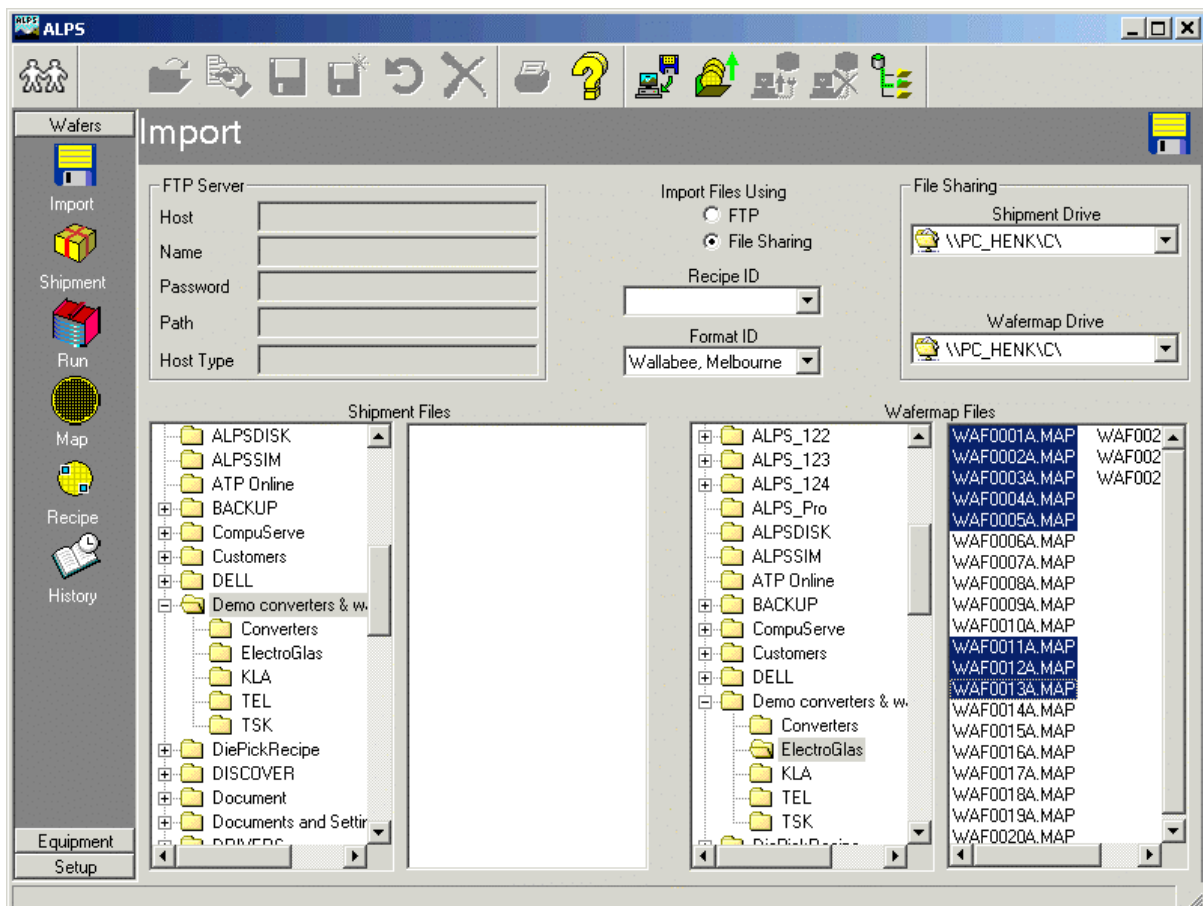
 - Recipes are always based on example wafer maps
 - The wafer map is shown, together with good dies, bad dies, edge dies, etc., instead of the confusing template maps used with Product Setups
 - Navigation from Map, Run, etc. screen to the recipe screen will automatically show the recipe for the last wafer selected. If that wafer did not have a recipe, a new recipe is shown.
 - When recipes are saved, the user can specify automatic assignments: to the example wafer, to all wafers in the same run or shipment.
- ❑ Information about the same wafer is shown when navigating between all relevant screens (Shipment, Run, Map, Recipe, History, Die Pick).
- ❑ The grouping of screens in the ALPS GUI has been improved:
 - The Sort and Purge screens have been moved to the Setup group.
 - The Recipe screen can be accessed both from the Wafers group and from the Equipment group, to reduce operator actions.
- ❑ A new "Selector" window is introduced, similar versions of which are used to select wafers, runs, equipment, formats, etc.
 - All selectors include item type-specific filters. Filters can be hidden for the unexperienced operator. Filter settings are preserved for each ALPS user.
 - Navigation between items in selector with up- and down arrow keys
- ❑ The installation includes USB dongle support.
- ❑ The client installation allows to enter a computername (instead of browsing only - see Installation Guide for details).

- On relevant screens in the Wafers group (Map, Run, Recipe, History) added "tooltips" when moving the cursor over a wafer map. The tooltip shows bin code and die coordinates:



Import Screen

- Navigation on to the Shipments and Wafers information panes has been improved; now in "Windows"-style. Added plus/minus boxes to folder navigation:



- A recipe can be selected to be assigned to the wafer maps imported.

Run Screen


- Completely redesigned. Information on the Run screen is extended with wafer and bin code information:

The screenshot shows the ALPS Run Screen for run b8h03. The main table lists wafer slots from 4 to 23, with wafer and frame IDs and rotation values. Slot 9 is highlighted. A secondary table shows bin codes with counts for various quality levels. A wafer map is displayed on the right, and a status bar at the bottom shows equipment details.

Slot	Wafer	Frame	Rotation	Recipe
	b8h03-4	b8h03-4	-	(none)
	b8h03-5	b8h03-5	-	(none)
	b8h03-6	b8h03-6	-	(none)
	b8h03-7	b8h03-7	-	(none)
	b8h03-8	b8h03-8	-	(none)
	b8h03-9	b8h03-9	-	(none)
	b8h03-10	b8h03-10-PQ	-	(none)
	b8h03-11	b8h03-11	-	(none)
	b8h03-12	b8h03-12	-	(none)
	b8h03-13	b8h03-13	-	(none)
	b8h03-14	b8h03-14	-	(none)
	b8h03-15	b8h03-15	-	(none)
	b8h03-16	b8h03-16	-	(none)
	b8h03-17	b8h03-17	-	(none)
	b8h03-18	b8h03-18	-	(none)
	b8h03-19	b8h03-19	-	(none)
	b8h03-20	b8h03-20	-	(none)
	b8h03-21	b8h03-21	-	(none)
	b8h03-22	b8h03-22	-	(none)
	b8h03-23	b8h03-23	-	(none)

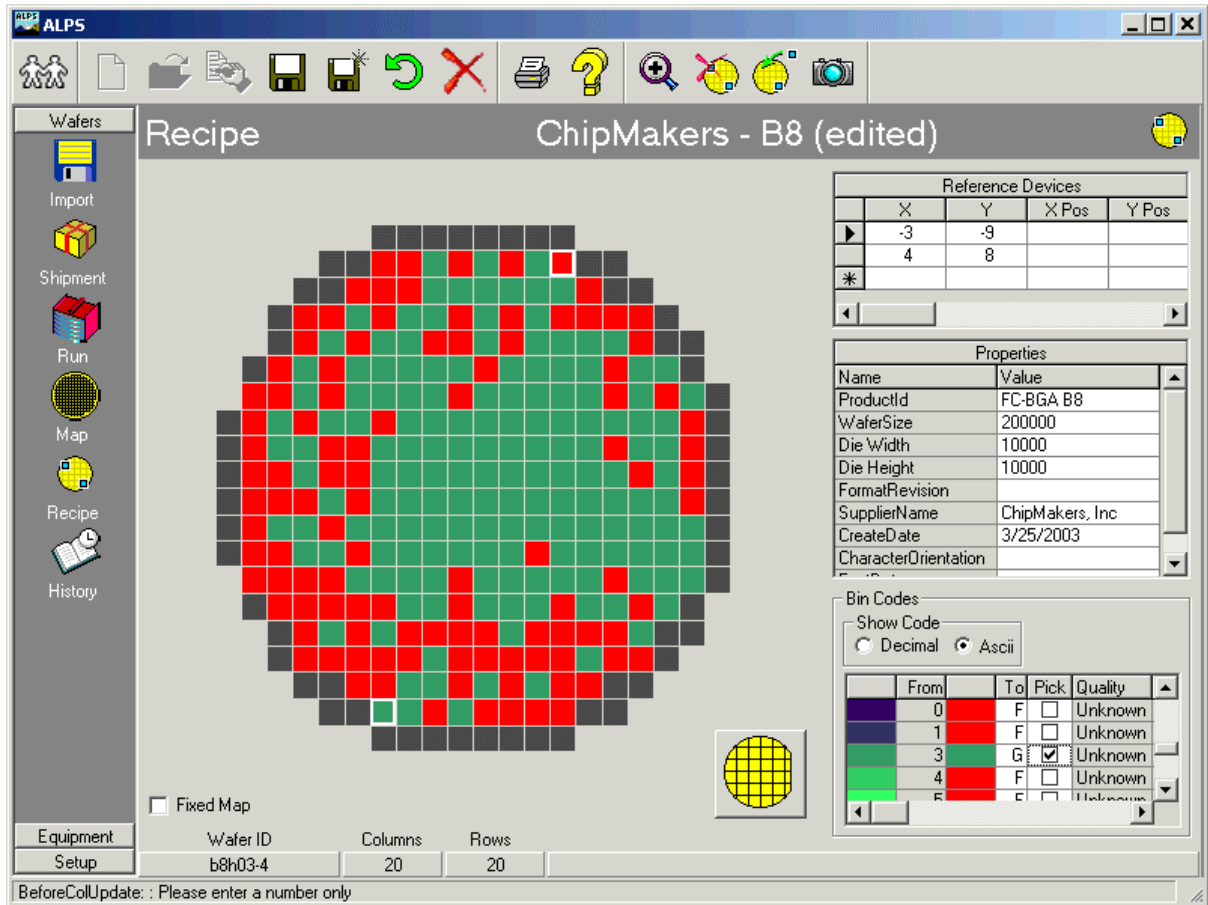
Code	Wafer	Run	Quality	Description
0	58	2192	Unknown	
3	178	3131	Unknown	
4	20	373	Unknown	
5	12	184	Unknown	
7		16	Unknown	
#254	60	1320	Unknown	

Map Screen

- Added "wafer mount" feature , allowing to create/change/remove frame identifications to wafers.

Recipe Screen

- New. See extensive information above in the section "General". Here is an example of the new screen layout:



Die Pick Screen

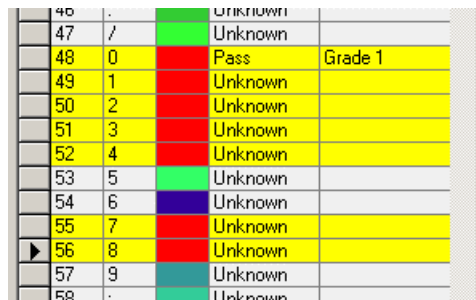
- ❑ New equipment drivers:
 - EJST
 - F&K Delvotec
 - Laurier
- ❑ Bug fixed: EquipmentManager did not always connect correctly after windows restart. It is no longer needed (on some computers) to restart the equipment manager, after Windows has started.
- ❑ Fixed problem with SECS license taken but never freed again. The SECS license is checked in again when you reboot the computer.
- ❑ Disabled all buttons when user switches to 'multi monitor' mode.
- ❑ Fixed bug that the New/Edit Equipment does not fit on the screen when 800x600 resolution is used.

System Setup Screen

- ❑ The frame remount option has been fixed.
- ❑ The frame print option (sort) has been fixed.

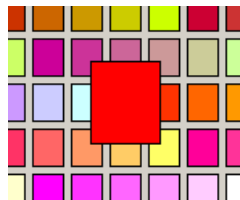
Format Setup Screen

- ❑ Selected bins: selection is yellow (instead of nothing). Multiple bins can be selected:



46	.	Green	Unknown	
47	/	Green	Unknown	
48	0	Red	Pass	Grade 1
49	1	Red	Unknown	
50	2	Red	Unknown	
51	3	Red	Unknown	
52	4	Red	Unknown	
53	5	Green	Unknown	
54	6	Blue	Unknown	
55	7	Red	Unknown	
56	8	Red	Unknown	
57	9	Teal	Unknown	
58	.	Teal	Unknown	

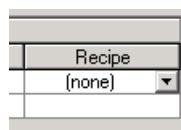
- ❑ Color palette improvements:
 - Selected color is no longer shown by a yellow rectangle (poor visibility) but instead by an enlarged color box:



- You can use the Up and Down to navigate the color palette.

Sort Setup Screen

- ❑ Allow multiple entries to be deleted at once.
- ❑ Improved error handling when user aborts editing.
- ❑ Recipe can be specified to be assigned automatically on wafer map import.



- ❑ It's no longer possible to end up with an empty path field. When the user changed a path, the focus moves to the next cell.
- ❑ If Backup paths defined do not exist, you are asked if they need to be created (file sharing only).
- ❑ Selection color changed to yellow. Same style as other ALPS screens.

Contact KINESYS Software

ALPS is a product of KINESYS Software. You can contact us as follows:

Europe office

Address: Achter Sint Pieter 21, NL – 3512 HR Utrecht, The Netherlands
Tel.: +31 30 233 2331
Fax: +31 30 233 1559
E-mail: support@kinesys.nl

USA office

Address: 6 C Street, Petaluma, CA 94952, U.S.A.
Tel.: +1 707 766 8855
Fax: +1 707 766 8196
E-mail: SalesUSA@kinesysinc.com

Company information

For further information about KINESYS Software, you can also consult our website:
<http://www.kinesysinc.com/>